

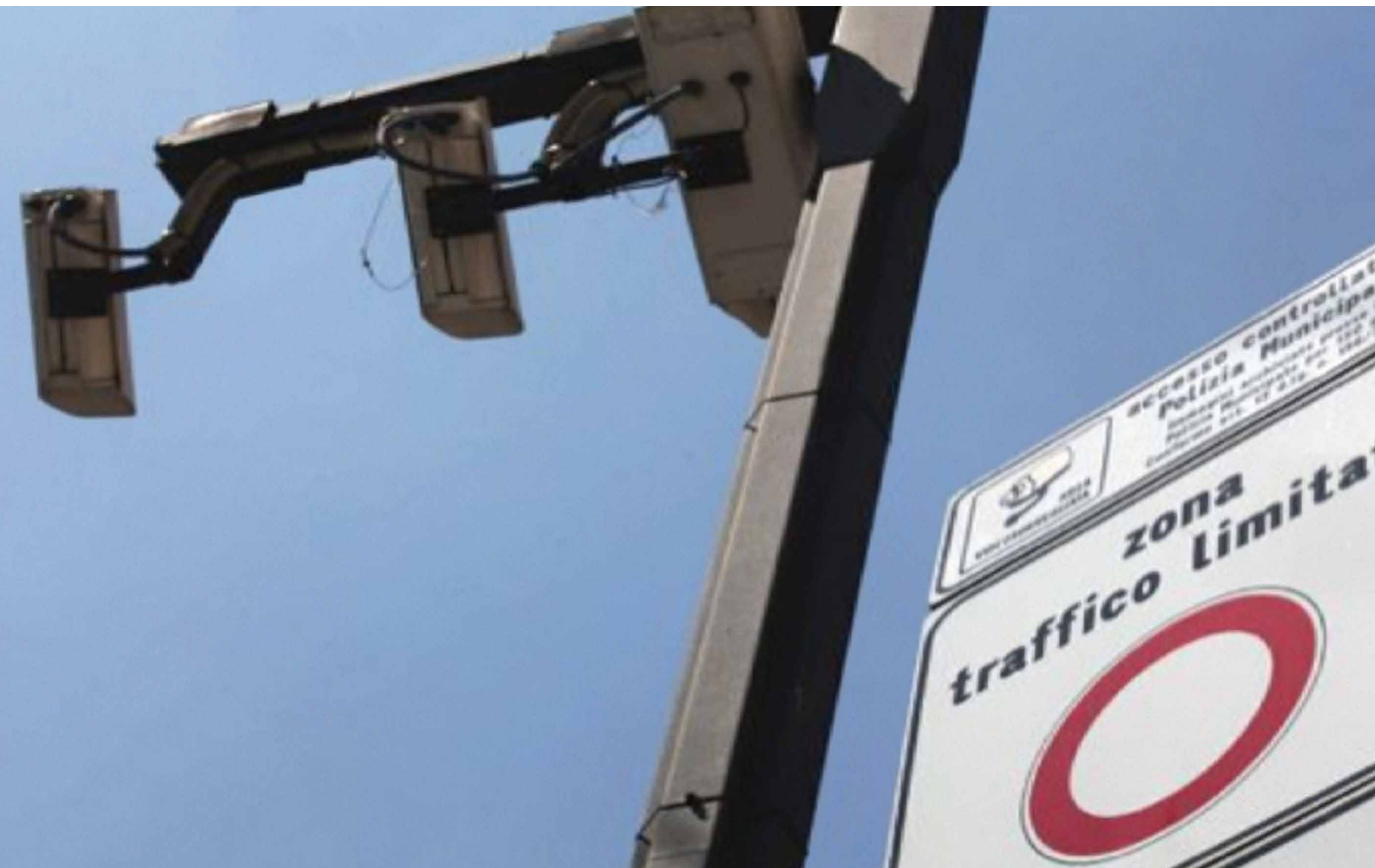
LTZ

ACCESS CONTROL SYSTEM FOR RESTRICTED TRAFFIC ZONE (LTZ)

ZTL EnVES EVO, is the only integrated system that allows to manage temporary access for institutions, merchants and residents, as well as differentiated by vehicle class and EU Classification, in connection with Vehicle registration DataBase

A camera acquires images of vehicles in transit and transmits to the central system, time, license plate number of non-authorized vehicles and the relative image.

The system is designed to ensure effectiveness and rigor in the identification of violations, respect for privacy rules, a flexible and economic management as well as the protection of Public's health (minimal environmental impact)



THE SYSTEM HAS THE FOLLOWING FEATURES

■ The only system for differentiated management access:

- Temporary permits for merchants and Entities
- Residents Permits: through checks with residents DB
- Euro classes Management: by connecting with DMV (Department of Motor Vehicles)
- Vehicle class management: with the ability to record the length of vehicles

■ Fully automatic: through an electronic connection allows agents to directly capture only the infringement photos.

■ Integration with TITAN®: only the image of the offending vehicles are sent to TITAN platform to enable officer to check all the circumstances that can confirm or rule violation.

■ Low environmental impact: the transit detection sensors are passive and with no need for maintenance and the devices are free of flash;

■ Respect for Privacy: Management of sensitive data and images relating to violations, perfectly in compliance with the respect of Privacy.

■ Compliance with the law: LTZ Enves EVO is a great tool for monitoring and compliance with rules of access in restricted areas.

■ It operates in any environment: through an infrared light illuminator harmless to the human eye

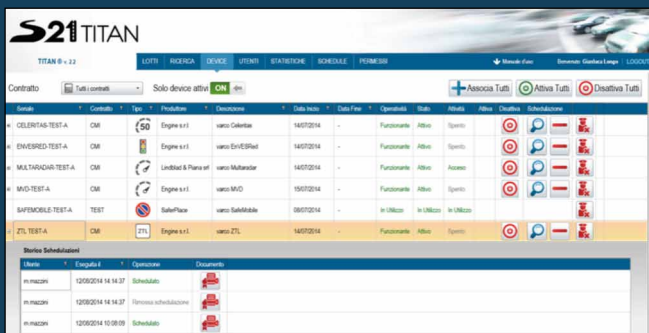
■ Approved by the Ministry of Infrastructure and Transport on the basis of the requirements of the New Highway Code and its Implementing Regulations and implementation, and the specific rules provided for by Presidential Decree June 22, 1999, n. 250, laying down rules for the authorization for the installation and operation of plants for the detection of the accesses of vehicles to city centers and restricted traffic areas, for the purpose of violations of the provisions on limitation of traffic and the imposition of the related sanctions.

■ Delivery of preprinted permits: Safety21 within the management service provides hard copy of the permits to access the ZTL zones.

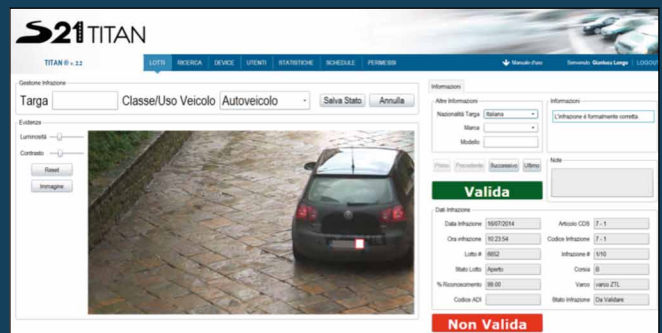


Example of LTZ permit

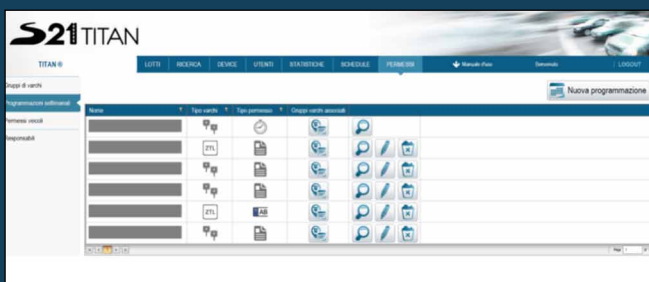
FULLY INTEGRATED WITH TITAN® PLATFORM



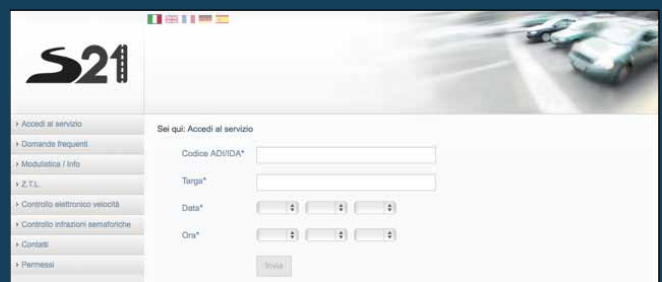
Device Management - LTZ



Verbalization Management - LTZ



Permits management - LTZ



Screenshot of TITAN® Web Portal to Citizens