

Velox

EXCEEDING SPEED LIMITS DETECTION SYSTEM

The **Enves EVO MVD system (Velox)** is an Italian approved system for the detection of exceeding the current speed limits in automatic mode.

Enves EVO MVD allows the detection of excessive speed through the use of a non invasive laser sensor, with low infrastructure impact.

In case of installation on roads with differentiated speed limit for different vehicles, it is possible to use a special Laser sensors for the classification of vehicle (without extra works on road surface).





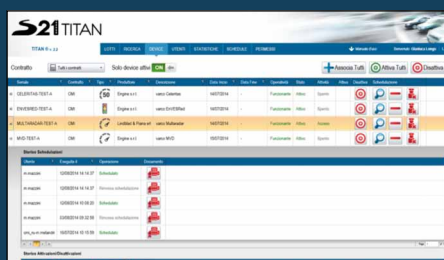
THE DEVICE ALLOWS

- The **detection of infringements of individual vehicles** by laser sensors, with their speed and classifications.
- The **acquisition** of the relative images by date, time and indication of the path that clearly document the infraction.
- The **check of the associated data** through the use of digital images of the vehicle that committed the infringement.
- **Immediate deploy** of frames and statistical data to the TITAN® platform.
- **Privacy Respect**: only the infringement images for exceeding speed are retained.
- **Transparency**: the system already considers the tolerance of 5% as required by the Highway Code.
- **Respect for Legality**: Enves EVO MVD is a great tool for the respect of speed and road safety.

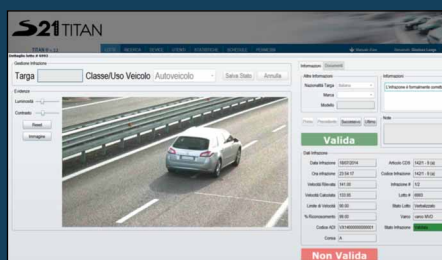
THE SYSTEM HAS THE FOLLOWING FEATURES

- **Fully digital**: through an online connection allows the TITAN® platform to acquire directly the evidence of the infringement.
- **Very high accuracy in speed measurement**: Speed detection certified by TUV Rehinland;
- **Simultaneous independent measurements**: the system distinguishes the individual lanes and detects speed violations even in different directions producing each single documentation.
- **Exhaustive documentation**: a sequence of images resumes the infringements dynamic reporting both previous events and subsequent ones. The images are stored also on citizen portal accessible only to the offender.
- **Minimal environmental impact**: the sensors which detect the transits are passive, and are not subject to maintenance; the devices are free of flash devices.
- **It operates in all weather conditions**: even in low light conditions and / or high temperatures;
- **Certified and reliable**: the devices are calibrated annually by accredited body under current regulations Certificate.
- **Approved by Ministry of Infrastructure and Transport** on the basis of the DL all'art.201 of April 30, 1992, nr. 285 paragraph 1a and 1b, according to which the presence of the police authorities is not required to immediately ascertain the violation.

FULLY INTEGRATED WITH TITAN® PLATFORM



Device Management - Velox



Verbalization Management - Velox



Screenshot of TITAN® Web Portal to Citizens